

Johann Sebastian Bach
(1685 - 1750)

Six Organ Works

arranged

for Flute, 2 Oboes,
2 Clarinets, 2 Horns,
2 Bassoons und Double Bass

by

Mordechai Rechtman

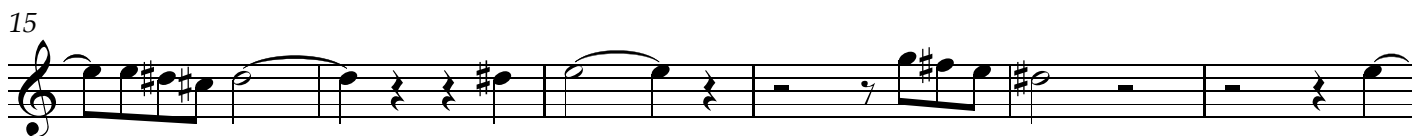
Horn 1

contents:

Prelude and Fugue d-minor BWV 539	
Prelude.....	P. 3
Fugue.....	P. 4
Tocatta, Adagio and Fugue C-Major BWV 564	
Tocatta.....	P. 6
Adagio.....	P. 9
Fugue.....	P. 10
Passacaglia c-minor BWV 582.....	P. 12
Two Chorale Preludes	
Christ lag in Todesbanden BWV 625.....	P. 15
Nun komm´ der Heiden Heiland BWV 659.....	P. 16
Fugue g-minor BWV 579.....	P. 17

Prelude and Fugue d-minor BWV 539

Allegro moderato ♩ - ca. 104



attacca

Fugue

Moderato ♩ = 80

Fl. solo

Kl. 1

6

11

cresc. - - - - f

16

Fig. 1

21

3

Hn. 2

Solo

p dolce

28

f

32

f espr.

37

tr

1 2 3 4

p molto dim. > pp

44

2

Kl. 1

p

50 **sostenuto** **a tempo pesante**
p cresc. poco a poco *mf* *f*

56
p *f*

62

67 **3** Kl. 1 1 2 3 4 5
pp *cresc.*

76 **Solo**
f *dolce*

80 **poco sostenuto** **in tempo**
fp *f*

85 **ritardando**

89 **poco meno mosso** **3** Kl. 2 Kl. 2
Kl. 1

95 **in tempo** **sostenuto**
f *ff*

Tocatta, Adagio and Fugue C-Major BWV 564

Allegro molto

Ob. 1

6

Ob. 1

5

15

Ob. 1

f

3

f

2

23

Sostenuto

f

f

f

28

mf

f

mf

32

f

36

mf

4

Fl.


mf

43

mf

2

49



53

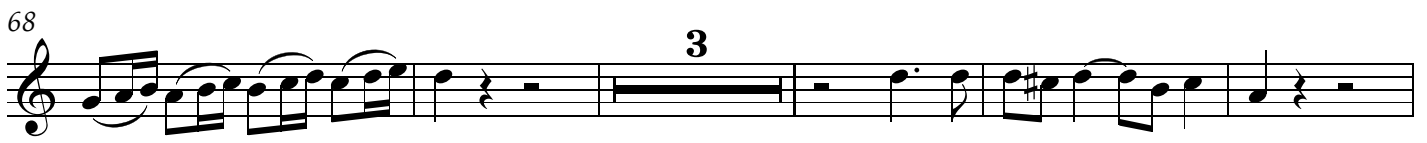


60

p cresc. *ritardando* *a tempo* *f*

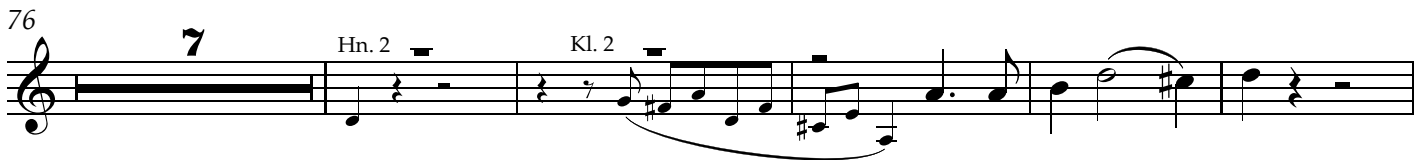


68

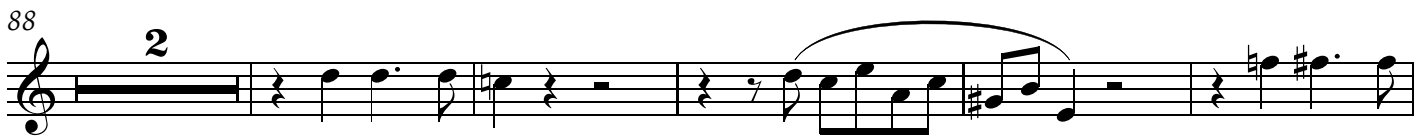


76

7 Hn. 2 Kl. 2



88

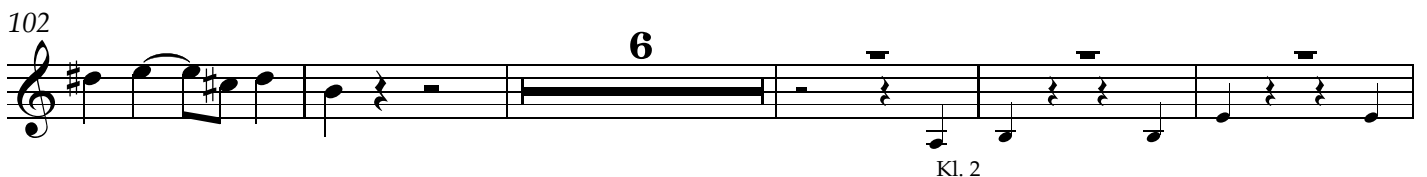


95



102

6



II

Adagio (in ♩)

1 *p* **2**

7 *Ob. 1*

11 *espr.* *cresc.*

15 *p*

19 *pp* *Kl. 2* *f sub.* *ff*

Grave ritardando Tempo primo subito

26

III

FUGUE

Allegro moderato

8 Kl. 1 8 Fg. 1

Ob. 1

20 8 Fg. 2 5 mf

mf

38 p marc. cresc.

44 mf

51 3 p cresc.

63 p cresc. cresc. mf

71

75 8

87 Fig. 1 12 Fig. 2 *p cresc.*

104 *mf*

110 3 *p dolce*

118 4 poco rall. a tempo Fig. 2 *p cresc.*

128 *mf* ritardando Ob. 1

135 a tempo *mf*

113 **6** Kb. pizz. **7** Fig. 2 *mf < f*

130 *sim.*

137 **7** *poco sostenuto* Fig. 2 *p*

149 *mf* *poco sost. in tempo primo* *marcato*

157 *f* *espressivo e tenuto*

163 **Thema fugatum**

167 *molto ritard. (in ♩)* *poco piu mosso (♩ - ca. 80/84)* **9** Kl. 1

180 Fig. 1 **2** *p cant.*

190 **7** **4** Ob. 1 **3** Kl. 2

208 *mf cant.* **4**

217 *p cresc. poco a poco* **2**

224 Hn. 2 solo
mf espr.

230 Ob. 1
mf

241
2

248

255 poco meno mosso a tempo
6 Kl. 1 f subito

268

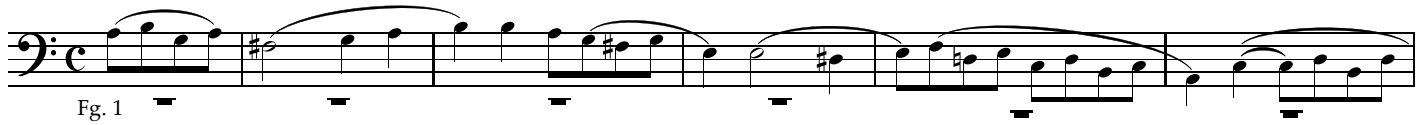
275

280 ritardando poco meno mosso (in ♩) meno mosso ritardando
ff

287 solo molto meno mosso (in ♩) Adagio sostenuto (in 12 ♩)
f espr. e marcato molto sost. ff

Christ lag in Todesbanden BWV 625

Andante sostenuto (♩ = 56)



Fugue g-minor BWV 578

(♩ = ca. 76)

Fl. Kl. 1

12 Fig. 1 Fig. 2

22 *pp dolce*

28 Ob. 1 Kl. 1 *pp*

37 Ob. 1 *p espr.*

48 solo *f marcato e cresc.* *p cresc. - - - -*

54 *pp* *p* *cresc. poco a poco*

60 *poco ritard.* solo *f* *sostenuto* *in tempo* *ff*

64 *molto ritardando (in ♩)*