

Johann Sebastian Bach
(1685 - 1750)

Six Organ Works

arranged

for Flute, 2 Oboes,
2 Clarinets, 2 Horns,
2 Bassoons und Double Bass

by

Mordechai Rechtman

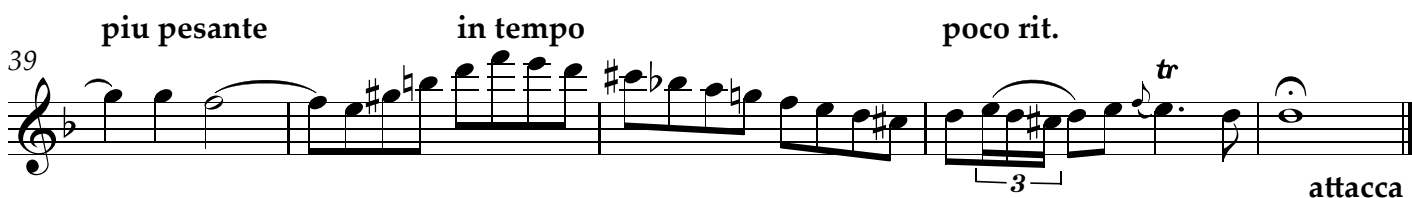
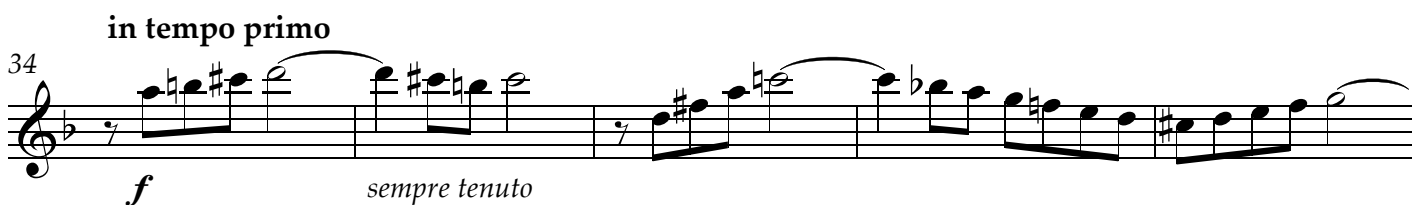
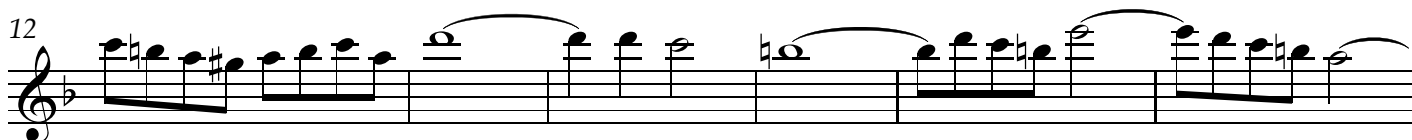
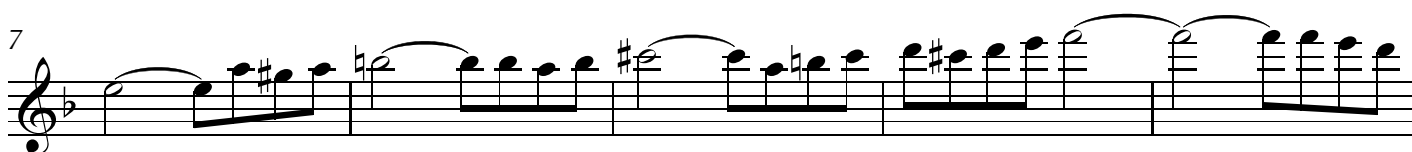
Flute

contents:

Prelude and Fugue d-minor BWV 539	
Prelude.....	P. 3
Fugue.....	P. 4
Tocatta, Adagio and Fugue C-Major BWV 564	
Tocatta.....	P. 6
Adagio.....	P. 8
Fugue.....	P. 9
Passacaglia c-minor BWV 582.....	P. 12
Two Chorale Preludes	
Christ lag in Todesbanden BWV 625.....	P. 17
Nun komm´ der Heiden Heiland BWV 659.....	P. 17
Fugue g-minor BWV 579.....	P. 18

Prelude and Fugue d-minor BWV 539

Allegro moderato ♩ - ca. 104



Fugue

Moderato ♩ = 80

1 Kl. 1 *p*

6 *f* Kl. 1

13 Hr. 1 5 6

27 Hn. 1 *f*

31 *f* 2

37 Ob. 1 *p* 7

47 *cresc.* *p*

51 *sostenuto* *espr.* *f* 2 Kl. 1

56 *p* *tr*

60 *f*

Detailed description: This is a page of a musical score for the Flute part of a Fugue. The score is written in treble clef with a key signature of one flat (B-flat) and a common time signature (C). The tempo is marked 'Moderato' with a metronome marking of ♩ = 80. The score consists of ten staves of music, numbered 1 through 60. Various instruments are indicated by their abbreviations: Kl. 1 (Clarinete 1), Hr. 1 (Fagotto 1), Hn. 1 (Horn 1), and Ob. 1 (Oboe 1). The flute part begins in measure 1 with a piano (*p*) dynamic. It features several melodic lines, some with slurs and ties. There are dynamic markings such as *f* (forte), *cresc.* (crescendo), and *espr.* (espressivo). Performance instructions include 'sostenuto' (sustained) and 'a tempo pesante' (at a heavy tempo). There are also numerical markings (5, 6, 7, 2) and a trill (*tr*) in measure 56. The score ends in measure 60 with a forte (*f*) dynamic.

63

67 *p*

70 *pp*

74 *cresc.* *f*

78 *poco sostenuto*

82 *in tempo* *f*

86 *ritardando* *tr*

89 *poco meno mosso* *p espr.*

91

93 *espr.* *in tempo* *sostenuto* *tr*

95 *ff* *espr.*

Tocatta, Adagio and Fugue C-Major BWV 564

Allegro molto

Ob. 1

f

5

7

10

13

17

p cresc.

20

f *f*

Sostenuto

Kl. 1

f *f*

30

f

35

5

45 3

52 tr *b*

57 *ritardando* *a tempo* 4 5 *f*

70 tr

76 6 Ob. 2 tr

86 2 2

94

100

106 4 Ob. 1 *f*

115 *p espr.* *p*

119 *cresc.* *f* 6

128 Ob. 2 *tr*

134 **8** Kb. pizz. arco *f*

146

152 **5** Hn. 1

161 *p espr.* **2** Fig. 2 + Kb. *f*

II

Adagio (in ♩) *pp*

9 *p*

13 *espr.* *cresc.*

16 *espr.*

18 **Grave ritardando**

p *p* *mf dim.*

23 **Tempo primo subito**
Hn. (F) 1

f sub. *f cresc.* *ff*

27

sf

III

FUGUE

Allegro moderato

pp

7

p *p*

18

p *cresc*

32

f

39

f

44

p cresc. **3** *f dim.*

54

8 Ob. 1 *p cresc.* *cresc.*

66

f

70

f

75

p

79

85

91

96

Passacaglia c-minor BWV 582

Andante sostenuto, molto tenuto ♩ = ca. 68

Kb. solo

p dolce

9

14

20 6 Ob. 1

p espr.

31 *cresc.*

37 3 solo

poco marcato

44

49 5 Ob. 1

dolce legg.

58

62 7 Hn. 1

73 **6** **6** Ob. 1
Kl. 1

89 **5**
p cantabile

101 solo
molto dolce

108

113 **6** Kb. pizz.
Fig. 1 *pp*

123 *f*

129 *mf < f sim.*

136 *fp* **3** **3**

138 **2**

142 *poco sostenuto*
p cant.

146

151 *mf espr. e marcato*

156

160 *poco sost. in tempo primo*
f espressivo e tenuto

165 *molto ritard. (in ♩)*

Thema fugatum
poco piu mosso (♩ - ca. 80/84)
 Ob. 1 *p dolce*

176

181 *simile*

186 **8** Ob. 1 *solo* *p*

198

202

207 *f* *simile* **5**

217 *p cresc. poco a poco*

220 *mf* **6**

229 Ob. 1 *mf espr.*

233

236 **6**

244

Kb. *mf*

253

solo *mf*

257

mf

263

poco meno mosso a tempo
3 *f*
Hn. 1 tr

271

f cant.

280

ritardando poco meno mosso (in 12) *f*

285

meno mosso ritardando molto meno mosso (in 12) *ff* *cresc.*

289

Adagio sostenuto (in 12) *ff*

Christ lag in Todesbanden BWV 625

Andante sostenuto (♩ = 56)

p dolce

8 *f cant.*

15 *senza dim. mp* *f*

25 *ritardando lunga* *pp*

Nun komm' der Heiden Heiland BWV 659

Andante (♩ = 72)

p

17 *p*

22 *sempre pp*

28 *p espr.* *cresc. poco a poco in tempo molto sostenuto*

31 *poco ritardando* *ff ritard.* *Adagio molto ritardando (in ♩)*

33 *Adagio molto ritardando (in ♩)*

Fugue g-minor BWV 578

(♩ = ca. 76)
solo

sempre tenuto

5

8

11

16

p

23

cresc.

31

p dolce

34

37

40 *poco a poco cresc.* 2

45 *p*

48 *cresc.* *f*

52

55 *p dolce*

59 *p cresc. poco a poco*

62 *poco ritard.* *in tempo* *ff* *marcato*

66 *molto ritardando (in ♩)*