

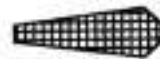
Fingering Chart for the Contra Bassoon for the use of NYO students



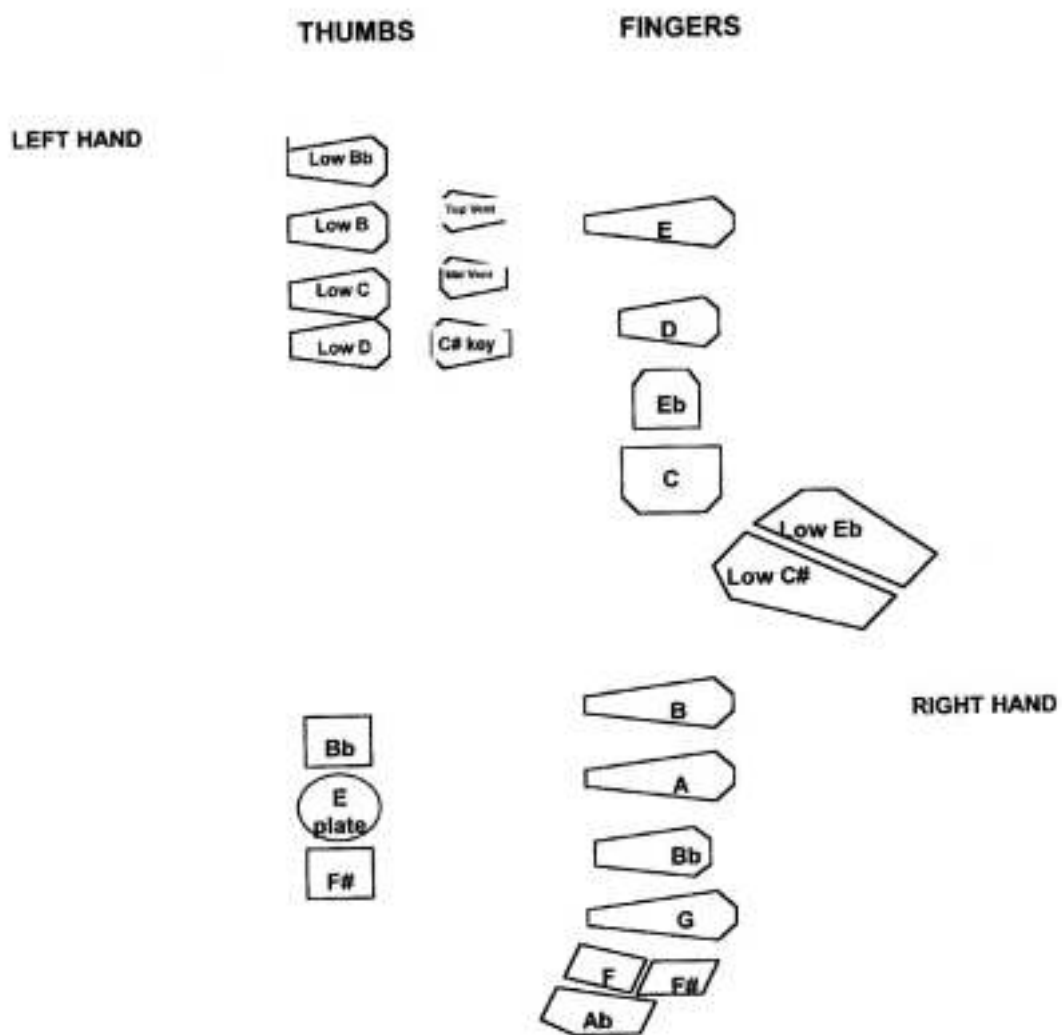
definitely use this key



possibly use this key



consider using this key



CONTRA FINGERINGS FOR THE NATIONAL YOUTH ORCHESTRA

This section shows three fingerings for the notes B \flat , B, and C. Each fingering is presented with two diagrams: one for the left hand and one for the right hand. The fingers are represented by black and white shapes, indicating which fingers are used and which are not. The notes are indicated by a circled letter with a flat sign for B \flat and a natural sign for B and C.

This section shows three fingerings for the notes D, E, and F. Each fingering is presented with two diagrams: one for the left hand and one for the right hand. The fingers are represented by black and white shapes. The note F includes a shaded key diagram, indicating a specific key combination. The notes are indicated by a circled letter with a sharp sign for D and E, and a natural sign for F.

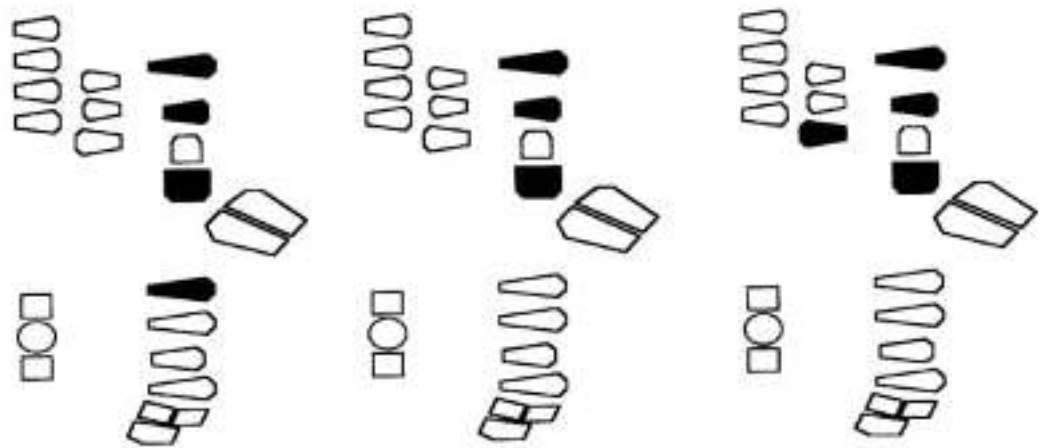
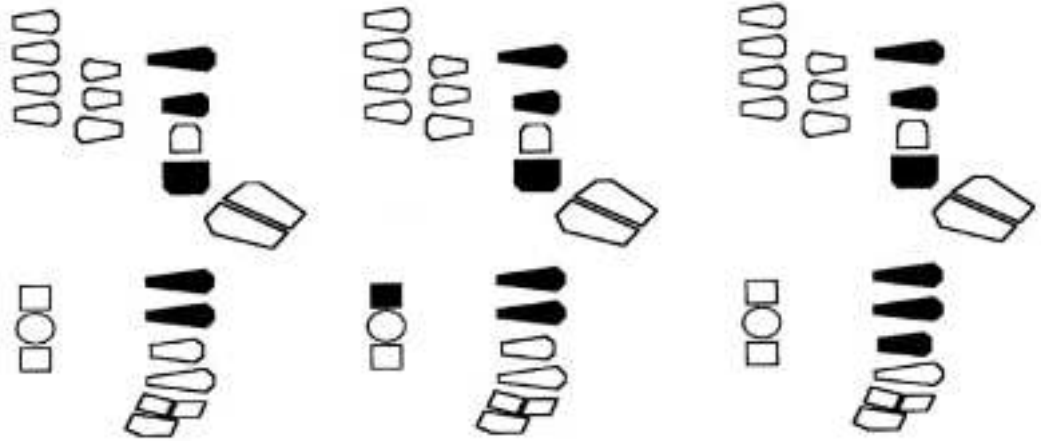
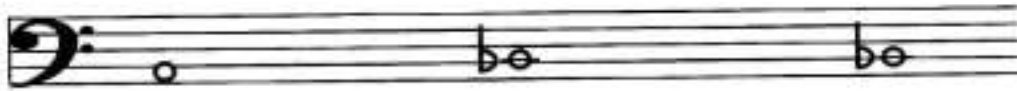
low D centres the note on most contras extra keys may flatten and aid pianissimo

CONTRA FINGERINGS FOR THE NATIONAL YOUTH ORCHESTRA

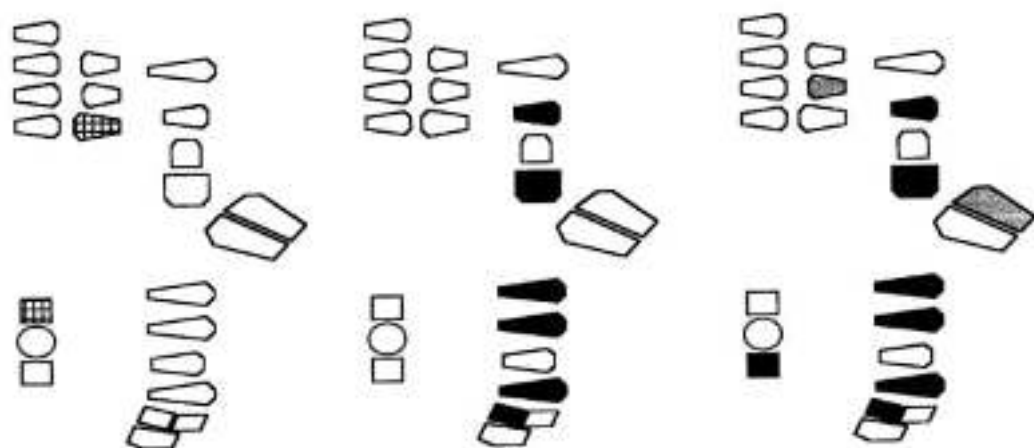
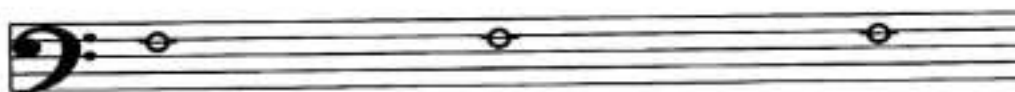
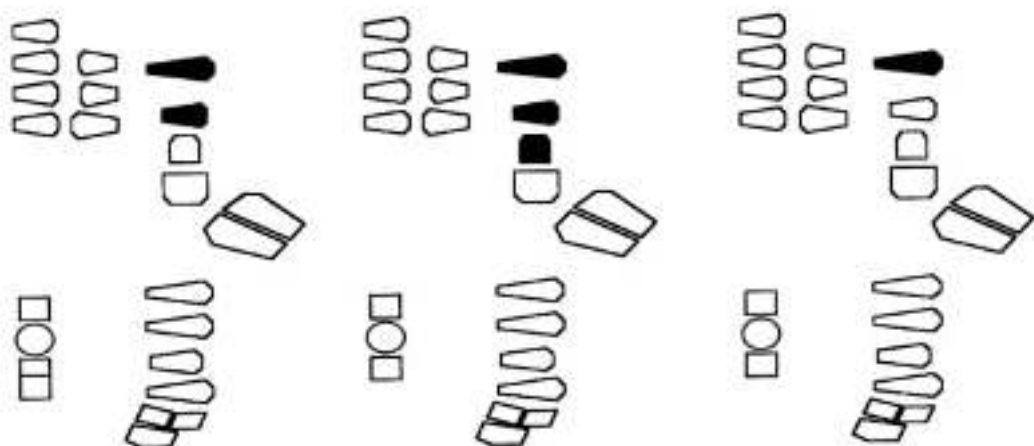
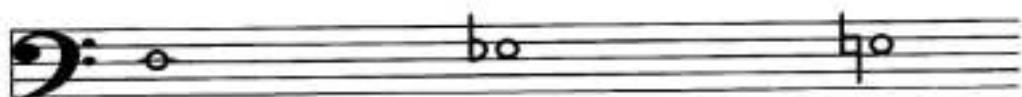
The first system shows a bass clef staff with three notes: a whole note G2, a whole note G3, and a whole note G4 with a sharp sign. Below each note are two diagrams representing the left and right hands. The left hand diagrams show fingerings for the thumb, index, middle, and ring fingers, with some fingers being blacked out to indicate they are not used. The right hand diagrams show fingerings for the index, middle, ring, and pinky fingers, also with some fingers blacked out. A small greyed-out box is present in the first diagram of the first system.

The second system shows a bass clef staff with three notes: a whole note G4 with a sharp sign, a whole note G3, and a whole note G2 with a sharp sign. Below each note are two diagrams representing the left and right hands, following the same notation style as the first system.

CONTRA FINGERINGS FOR THE NATIONAL YOUTH ORCHESTRA



CONTRA FINGERINGS FOR THE NATIONAL YOUTH ORCHESTRA

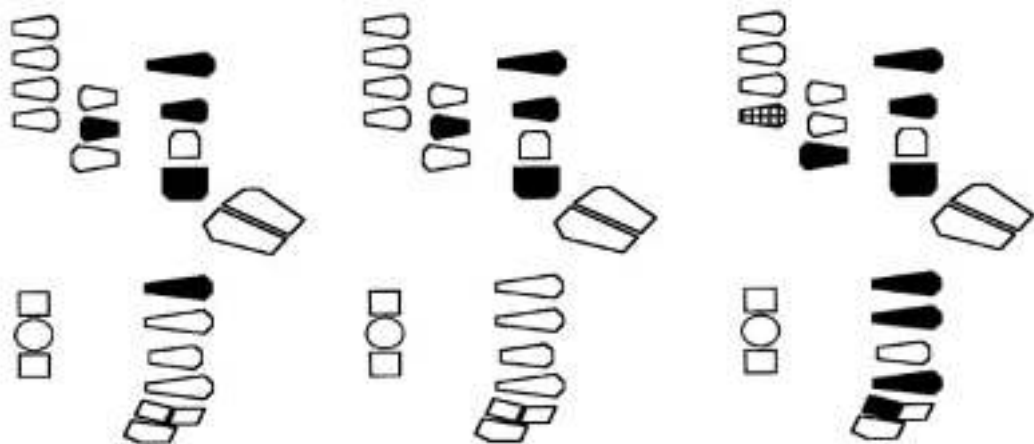
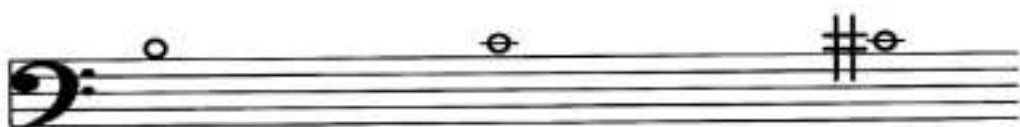


CONTRA FINGERINGS FOR THE NATIONAL YOUTH ORCHESTRA

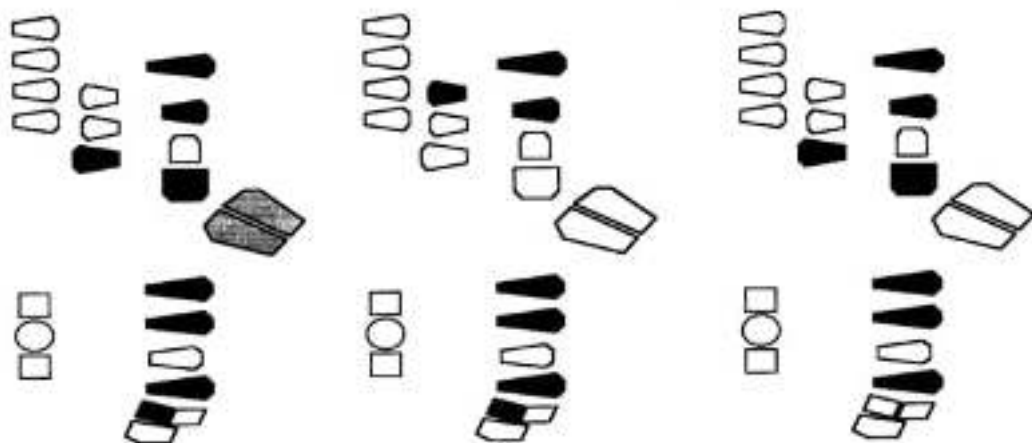
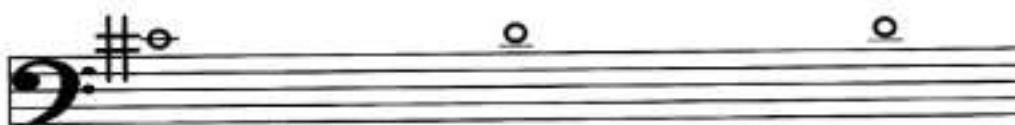
This section shows three notes on a bass clef staff with a key signature of one sharp (F#). The notes are G2, G#2, and A2. Below each note is a set of fingering diagrams for the left and right hands. The diagrams use various symbols: solid black shapes for fingers to be pressed, open shapes for fingers to be lifted, and diagonal lines for keys to be pressed. The left hand diagrams are positioned above the right hand diagrams.

This section shows three notes on a bass clef staff with a key signature of one flat (Bb). The notes are G2, Gb2, and Ab2. Below each note is a set of fingering diagrams for the left and right hands. The diagrams use various symbols: solid black shapes for fingers to be pressed, open shapes for fingers to be lifted, and diagonal lines for keys to be pressed. The left hand diagrams are positioned above the right hand diagrams.

CONTRA FINGERINGS FOR THE NATIONAL YOUTH ORCHESTRA



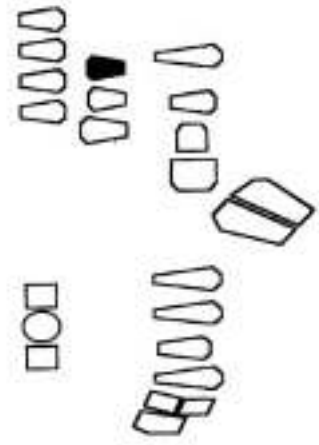
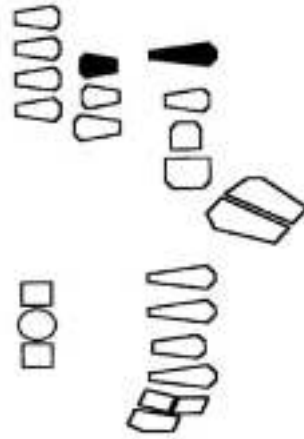
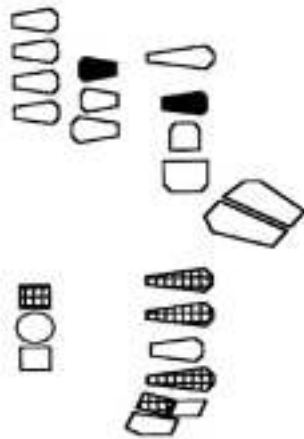
low D key raises pitch



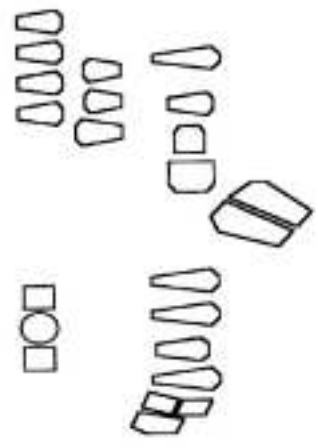
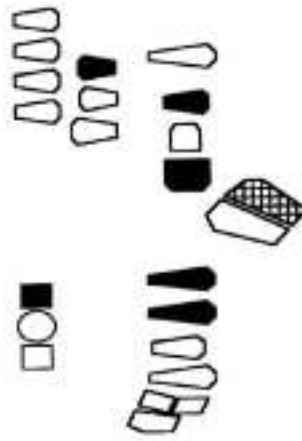
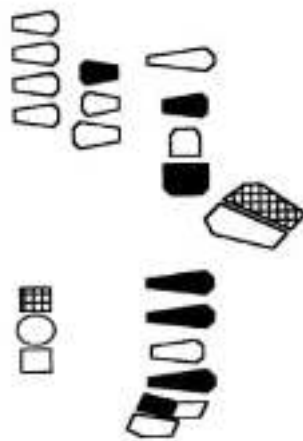
low Eb or low C# may help

for slurring from C# as
in "Rite of Spring" -
2nd contra part

CONTRA FINGERINGS FOR THE NATIONAL YOUTH ORCHESTRA



From this point onwards fingerings suggested are a basis for experimentation. They will vary from player to player according to the instrument, reed and embouchure used. Insert your own in the blanks provided.



CONTRA FINGERINGS FOR THE NATIONAL YOUTH ORCHESTRA

The image displays two sets of fingering charts for the contra bassoon, arranged in two rows. Each row contains three diagrams, one for each of the notes D, E, and F. The top row is for the key of D major (indicated by a sharp sign on the D line), and the bottom row is for the key of D minor (indicated by a natural sign on the D line). Each diagram shows a five-line staff with a bass clef and a note on the D line. Below each staff, there are two columns of fingerings: the left column represents the left hand and the right column represents the right hand. The fingerings are shown as numbers 1-5, with some numbers filled in black to indicate specific fingerings. The diagrams are arranged in a grid-like fashion, with three diagrams per row and two columns per diagram.

CONTRA FINGERINGS FOR THE NATIONAL YOUTH ORCHESTRA

The image displays two systems of musical notation for the contra bassoon, each consisting of a staff and two columns of fingering diagrams. The top system is for the key of D major (one sharp), and the bottom system is for the key of D minor (no sharps or flats). Each system contains three measures of music. The fingering diagrams use various symbols: open circles for fingers, solid black shapes for fingers, and rectangles for the left hand. The diagrams are arranged to show the fingerings for both the right and left hands for each note in the measures.

CONTRA FINGERINGS FOR THE NATIONAL YOUTH ORCHESTRA

This section features three measures of music on a bass clef staff. Each measure is accompanied by a fingering chart. The charts use various symbols: solid black shapes for fingers, open shapes for holes, and diagonal lines for the thumb. The first measure has a flat sign (b) above the staff. The second measure has a flat sign (b) above the staff. The third measure has a flat sign (b) above the staff.

for Ravel "Mother Goose" suite
sturring up from middle C

This section features three measures of music on a bass clef staff. Each measure is accompanied by a fingering chart. The charts use various symbols: solid black shapes for fingers, open shapes for holes, and diagonal lines for the thumb. The first measure has a flat sign (b) above the staff. The second measure has a flat sign (b) above the staff. The third measure has a flat sign (b) above the staff.

CONTRA FINGERINGS FOR THE NATIONAL YOUTH ORCHESTRA

The first system shows a musical staff with a treble clef and a common time signature. Three notes are placed on the staff, each with a circled number above it: 1, 2, and 3. Below each note is a set of fingering diagrams for the left and right hands. The diagrams use various symbols: solid black shapes for fingers to be pressed, open shapes for fingers to be lifted, and diagonal lines for the thumb. The first note (C4) has a left hand diagram with fingers 1-4 and thumb, and a right hand diagram with fingers 1-4. The second note (D4) has a left hand diagram with fingers 1-4 and thumb, and a right hand diagram with fingers 1-4. The third note (E4) has a left hand diagram with fingers 1-4 and thumb, and a right hand diagram with fingers 1-4.

The second system shows a musical staff with a treble clef and a common time signature. Three notes are placed on the staff, each with a circled number above it: 1, 2, and 3. Below each note is a set of fingering diagrams for the left and right hands. The diagrams use various symbols: solid black shapes for fingers to be pressed, open shapes for fingers to be lifted, and diagonal lines for the thumb. The first note (F4) has a left hand diagram with fingers 1-4 and thumb, and a right hand diagram with fingers 1-4. The second note (G4) has a left hand diagram with fingers 1-4 and thumb, and a right hand diagram with fingers 1-4. The third note (A4) has a left hand diagram with fingers 1-4 and thumb, and a right hand diagram with fingers 1-4.